



**County of Ventura
COUNTY CLERK-RECORDER,
REGISTRAR OF VOTERS**

MARK A. LUNN
County Clerk-Recorder,
Registrar of Voters

Date: May 2, 2018
To: Candidates; Members of the Grand Jury; Members of the Board of Supervisors; Michael Powers, County Executive Officer; and All Interested Parties.
From: *Mal* **MARK A. LUNN**, CERA, REO, Clerk-Recorder, Registrar of Voters
Subject: **Election Night Observer Information**

JAMES B. BECKER
Assistant County Clerk and Recorder

TRACY D. SAUCEDO
Assistant Registrar of Voters

MARTIN E. COBOS
Operations Manager

MIRANDA L. NOBRIGA
Public Information Officer

You are invited to observe Election Day activities and to be present in our office on Election Night to observe the tally (counting) of the official ballots and the release of returns for the June 5, 2018 Statewide Direct Primary Election.

The following is the anticipated schedule of events surrounding Election Day:

May 7 – May 23, 2018

The required logic and accuracy tests will be conducted with test ballots and vote simulations to ensure that the ballot counting programs are functioning properly before any voting machines are issued to precincts.

Election Day, June 5, 2018

7:00 a.m. – 8:00 p.m. Polling places throughout Ventura County are open for voting.

8:00 p.m. Polling places will close and precinct boards will begin processing voted ballots, packing supplies, securing the polling places, and delivering the voted ballots, equipment, memory packs and results cartridges to the pick-up points. This may take approximately two hours.

8:05 p.m. The Vote By Mail ballots and the 209 mail ballot precinct ballots will be counted. The first semi-official summary report of the results will be released via the website and at the Central Counting Place (Elections Division). On <http://venturavote.org>, you may view the results by clicking on the Election Results/Canvass menu. The results are updated periodically throughout Election Night.

8:45 – 10:30 p.m. Voted ballots, memory packs and results cartridges from the 365 polling places in the County will begin arriving at the Central Counting Place. These ballots will be secured, the memory packs and cartridges from each precinct will be read, and a semi-official summary report will be released. Summary reports will be released periodically. Upon completion, a final semi-official (Election Night) summary report will be released.

Preserving History • Protecting Democracy

June 6, 2018 A semi-official Statement of Votes will be available for review.
10:00 a.m.

Election Night Procedures

The memory packs from the Optech Insights (ballot scanner) and the results cartridges from the AVC Edge (touch screen) will be read in the Elections Division (Lower Plaza of the Hall of Administration) at the Government Center. The only off-limit areas in the Elections Division are the Elections Technology Room, the APEX room (secure signature verification and precinct sorter machine), the Vote By Mail processing area, and the warehouse area inside the chain link fence. In addition, we ask that caution be used in the hallway area leading through the warehouse to the loading dock. In the past, observers and visitors have congregated there and inadvertently impeded workers from processing precinct equipment. If you have any questions at any viewing location, please ask for assistance at the office front counter.

Voted ballots, equipment, memory packs, and results cartridges from each precinct are delivered by two precinct election officers. The election officers will take their voted ballots and equipment to their area receiving station where the equipment will be picked up by Sheriff's Deputies and transported to the Elections Division.

When the voted ballots, equipment, memory packs, and results cartridges arrive at the Central Counting Place, the condition of the materials is noted, the precinct is scanned and checked off, and the containers of memory packs and results cartridges are extracted and given to the Memory Package/Results Cartridge Check-in Board for scanning, opening, and preliminary processing. After this step, the memory packs and results cartridges are delivered to the Elections Technology Room to upload results to the tally (counting) program (Win/EDS).

Throughout the evening, summary reports are printed, which include all previous results as of the time the reports are printed. Summary reports are printed periodically and copies are given to the news media and public.

Election results will also be posted at <http://venturavote.org> and updated after each summary report is released from 8:05 p.m. to completion of Election Night.

To give you a perspective of this election, the following contests are contained on 21 different ballot types (styles) throughout the County:

VOTER-NOMINATED OFFICES

FEDERAL OFFICES

United States Senator	Elect 1 – 32 candidates
24 th Congressional District	Elect 1 – 3 candidates
25 th Congressional District	Elect 1 – 5 candidates
26 th Congressional District	Elect 1 – 4 candidates
30 th Congressional District	Elect 1 – 4 candidates

STATE OFFICES

Governor	Elect 1 – 27 candidates
Lieutenant Governor	Elect 1 – 11 candidates
Secretary of State	Elect 1 – 8 candidates
Controller	Elect 1 – 3 candidates
Treasurer	Elect 1 – 5 candidates
Attorney General	Elect 1 – 4 candidates
Insurance Commissioner	Elect 1 – 4 candidates
Member, State Board of Equalization, 3 rd District	Elect 1 – 8 candidates

LEGISLATIVE OFFICES

37 th Assembly District	Elect 1 – 3 candidates
38 th Assembly District	Elect 1 – 2 candidates
44 th Assembly District	Elect 1 – 3 candidates
45 th Assembly District	Elect 1 – 7 candidates

NON-PARTISAN OFFICES

Superintendent of Public Instruction	Elect 1 – 4 candidates
Ventura County Supervisor, 2 nd District	Elect 1 – 1 candidate
Ventura County Supervisor, 4 th District	Elect 1 – 3 candidates
Assessor	Elect 1 – 1 candidate
Auditor-Controller	Elect 1 – 1 candidate
Clerk and Recorder	Elect 1 – 1 candidate
District Attorney	Elect 1 – 1 candidate
Sheriff	Elect 1 – 1 candidate
Superintendent of Schools	Elect 1 – 1 candidate
Treasurer-Tax Collector	Elect 1 – 1 candidate

JUDICIAL OFFICES

Superior Court Judge – Office No. 4	Elect 1 – 2 candidates
Superior Court Judge – Office No. 6	Elect 1 – 2 candidates

WRITE-IN CANDIDATES

Should a candidate qualify as a write-in candidate for an office on the June 5, 2018 Statewide Direct Primary Election ballot, a list of all qualified write-in candidate names will be available at each polling place to assist the voters.

STATE PROPOSITIONS

PROPOSITION 68

AUTHORIZES BONDS FUNDING PARKS, NATURAL RESOURCES PROTECTION, CLIMATE ADAPTATION, WATER QUALITY AND SUPPLY, AND FLOOD PROTECTION. Authorizes \$4 billion in general obligation bonds for: parks, natural resources protection, climate adaptation, water quality and supply, and flood protection. Fiscal Impact: Increased state bond repayment costs averaging \$200 million annually over 40 years. Local government savings for natural resources-related projects, likely averaging several tens of millions of dollars annually over the next few decades.

PROPOSITION 69

REQUIRES THAT CERTAIN NEW TRANSPORTATION REVENUES BE USED FOR TRANSPORTATION PURPOSES. LEGISLATIVE CONSTITUTIONAL AMENDMENT. Requires that certain revenues generated by a 2017 transportation funding law be used only for transportation purposes and generally prohibits Legislature from diverting funds to other purposes. Fiscal Impact: No direct effect on the amount of state and local revenues or costs but could affect how some monies are spent.

PROPOSITION 70

REQUIRES LEGISLATIVE SUPERMAJORITY VOTE APPROVING USE OF CAP-AND-TRADE RESERVE FUND. LEGISLATIVE CONSTITUTIONAL AMENDMENT. Beginning in 2024, requires that cap-and-trade revenues accumulate in a reserve fund until the Legislature, by a two-thirds majority, authorizes use of the revenues. Fiscal Impact: Beginning in 2024, potential temporary increase in state sales tax revenue, ranging from none to a few hundred million dollars annually, and possible changes in how revenue from sale of greenhouse gas emission permits is spent.

PROPOSITION 71

SETS EFFECTIVE DATE FOR BALLOT MEASURES. LEGISLATIVE CONSTITUTIONAL AMENDMENT. Provides that ballot measures approved by a majority of voters shall take effect five days after the Secretary of State certifies the results of the election. Fiscal Impact: Likely little or no effect on state and local finances.

PROPOSITION 72

PERMITS LEGISLATURE TO EXCLUDE NEWLY CONSTRUCTED RAIN-CAPTURE SYSTEMS FROM PROPERTY-TAX REASSESSMENT REQUIREMENT. LEGISLATIVE CONSTITUTIONAL AMENDMENT. Permits Legislature to allow construction of rain-capture systems, completed on or after January 1, 2019, without requiring property-tax reassessment. Fiscal Impact: Probably minor reduction in annual property tax revenues to local governments.

LOCAL MEASURES

OXNARD UNION HIGH SCHOOL DISTRICT - MEASURE A

To improve/repair Adolfo Camarillo, Channel Islands, Condor, Frontier, Hueneme, Oxnard, Pacifica, Rio Mesa, and Rancho Campana and Oxnard Adult School including leaky roofs, outdated plumbing, electrical wiring and air conditioning; and construct a new high school in Oxnard, shall Oxnard Union High School District issue \$350 million of bonds with legal rates, estimated annual repayments averaging \$20 million for 31 years, projected tax rates of 3 cents per \$100 of assessed valuation, citizen oversight and annual audits?

HUENEME ELEMENTARY SCHOOL DISTRICT - MEASURE B

To improve the quality of education; upgrade, modernize, and construct classrooms, restrooms and school facilities; repair or replace leaky roofs; renovate plumbing, sewer, and build new classrooms; shall the Hueneme Elementary School District issue \$34,200,000 of bonds at legal interest rates, raising between \$1,300,000 and \$3,300,000 annually at a rate of approximately \$0.03 per \$100 assessed value, with annual audits, an independent citizens' oversight committee, NO money for salaries, and funding that cannot be taken by the State?

PLEASANT VALLEY SCHOOL DISTRICT - MEASURE C

To improve the quality of education; repair/replace leaky roofs; increase energy efficiency; modernize and construct classrooms, restrooms and school facilities; and improve student access to modern technology; shall Pleasant Valley School District issue \$119,000,000 of bonds at legal rates, raising between \$4,400,000 - \$10,800,000 annually through 2048 at a rate of approximately \$0.03 per \$100 assessed value, with annual audits, an independent citizens' oversight committee, NO money for salaries, and funding that cannot be taken by the State?

EL TEJON UNIFIED SCHOOL DISTRICT - MEASURE D

To improve the quality of education; make health and safety improvements; modernize outdated classrooms, restrooms and school facilities; and improve student access to modern technology; shall El Tejon Unified School District issue \$16,000,000 of bonds at legal rates, averaging \$900,000 annually as long as bonds are outstanding at a rate of approximately 5.7 cents per \$100 assessed value, with annual audits, an independent citizens' oversight committee, NO money for salaries, and funding that cannot be taken by the State?

VOTE CANVASS

The election canvass process is an internal audit and is required by State law to ensure the accuracy of election results. For this election, California election law allows 30 days to conduct the official canvass of final election results. The canvass period involves a number of different tasks that ensure processing all voted ballots, accounting for all election supplies and equipment utilized during the election, and providing for an audit and reconciliation of election returns.

When the canvass is completed, the County Clerk and Recorder certifies the results. All aspects of the canvass are open for public observation. During the canvass, Vote By Mail and provisional ballots that are not counted on Election Night are researched to validate eligibility. Once validated, these additional Vote By Mail and provisional ballots are counted. The canvass concludes with the certification and issuance of official election results.

Listed below are the major components of the official canvass. These components must be performed in a particular order. On the day after the election, Vote By Mail ballots currently in-house and those turned in at the polls are processed and tallied. While the Vote By Mail ballots are processed, the Vote/No Vote procedure is started. Once the Vote/No Vote component is completed, the provisional ballots are processed. In addition to these components of the canvass, the damaged and remade ballots are being reviewed and completed, and the Vote By Mail and poll write-in ballots are being reviewed and tallied throughout the canvass period.

AUDIT

Roster Reconciliation – Following the close of the polls on Election Night, precinct officers are responsible for completing the Official Ballot Statement which is located on the front cover of each precinct's Master Roster. As part of the official canvass, the number of signatures indicated by the Inspector on the roster is compared to the number of ballots tabulated by the computer tally system.

One Percent (1%) Manual Vote Tally – All voted ballots from a randomly selected one percent (1%) of the 574 total precincts are manually tallied and balanced against the computer results to verify the accuracy of the election tally system. This process is required by law.

BALLOTS ADDED DURING OFFICIAL CANVASS

The following ballots are withheld from the tally system on Election Night. Once eligibility is determined, these ballots are added to the election results. Withheld ballot categories include:

- Vote By Mail Ballots returned on Election Day to the Elections Division or dropped off at polling locations. These ballots do not arrive in sufficient time to be individually signature-verified, opened, and prepared for tabulation on Election Night.
- Damaged Ballots which are unable to be processed through the election tally system. These ballots must be manually duplicated prior to tabulation. Damaged ballots occur when ballots arrive torn or damaged and cannot be processed through the vote tabulation equipment.

- Write-In Ballots must be individually reviewed to determine if the write-in vote is for a qualified write-in candidate. Both Vote By Mail ballots and ballots voted at the polls must be manually reviewed for valid write-in ballot tabulation.
- Provisional Ballots issued at the 365 polling places on Election Day. These ballots must be individually researched to determine eligibility. Provisional ballots are issued at polling places to voters whose names are not on the voter file or who appeared at a polling place other than the one noted on their voter registration record.
- Remade ballots occur when voters cast ballots outside their assigned voting precinct via a provisional ballot. If a contest or contests on a provisional ballot do not represent those contests offered on the voter's assigned precinct ballot, the ballot is remade to include only those votes cast that correspond with those offered in the assigned precinct.

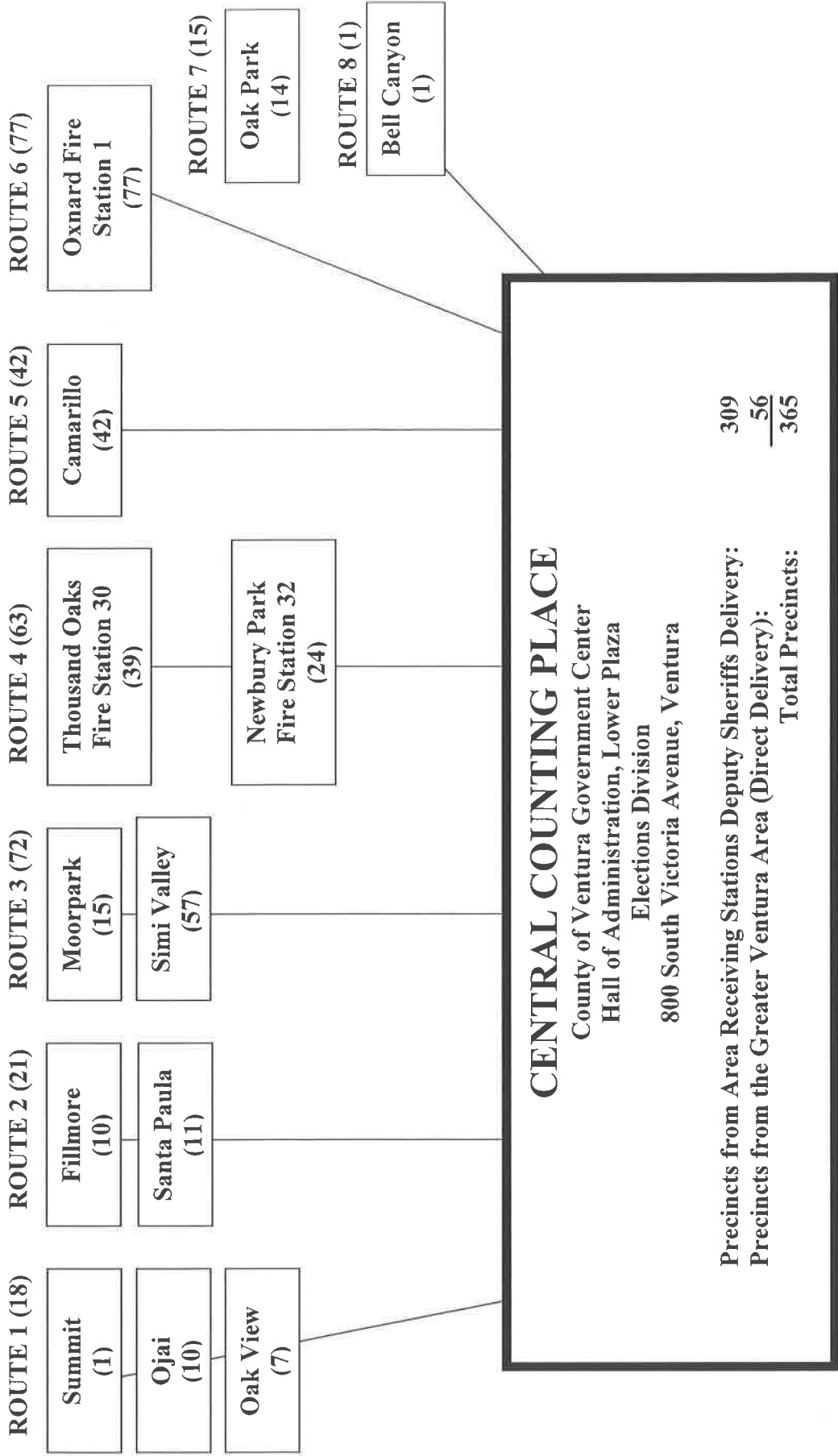
VOTE/NO VOTE

Each of the Master Rosters in the 365 polling places must be reviewed for completeness and accuracy and then each person who voted will be given credit for voting. This process involves bar code scanning every Master Roster to capture each voting record for the approximately 429,301 registered voters.

BALLOT BOX PICK-UP ROUTES

Statewide Direct Primary Election

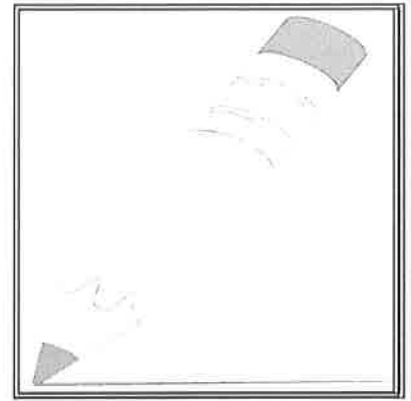
June 5, 2018



ELECTION OBSERVER QUESTIONNAIRE

Statewide Direct Primary Election

June 5, 2018



Please complete and return to: **MARK A. LUNN**, CERA, REO
 Clerk-Recorder, Registrar of Voters
 Hall of Administration
 Elections Division
 800 South Victoria Avenue
 Ventura, CA 93009

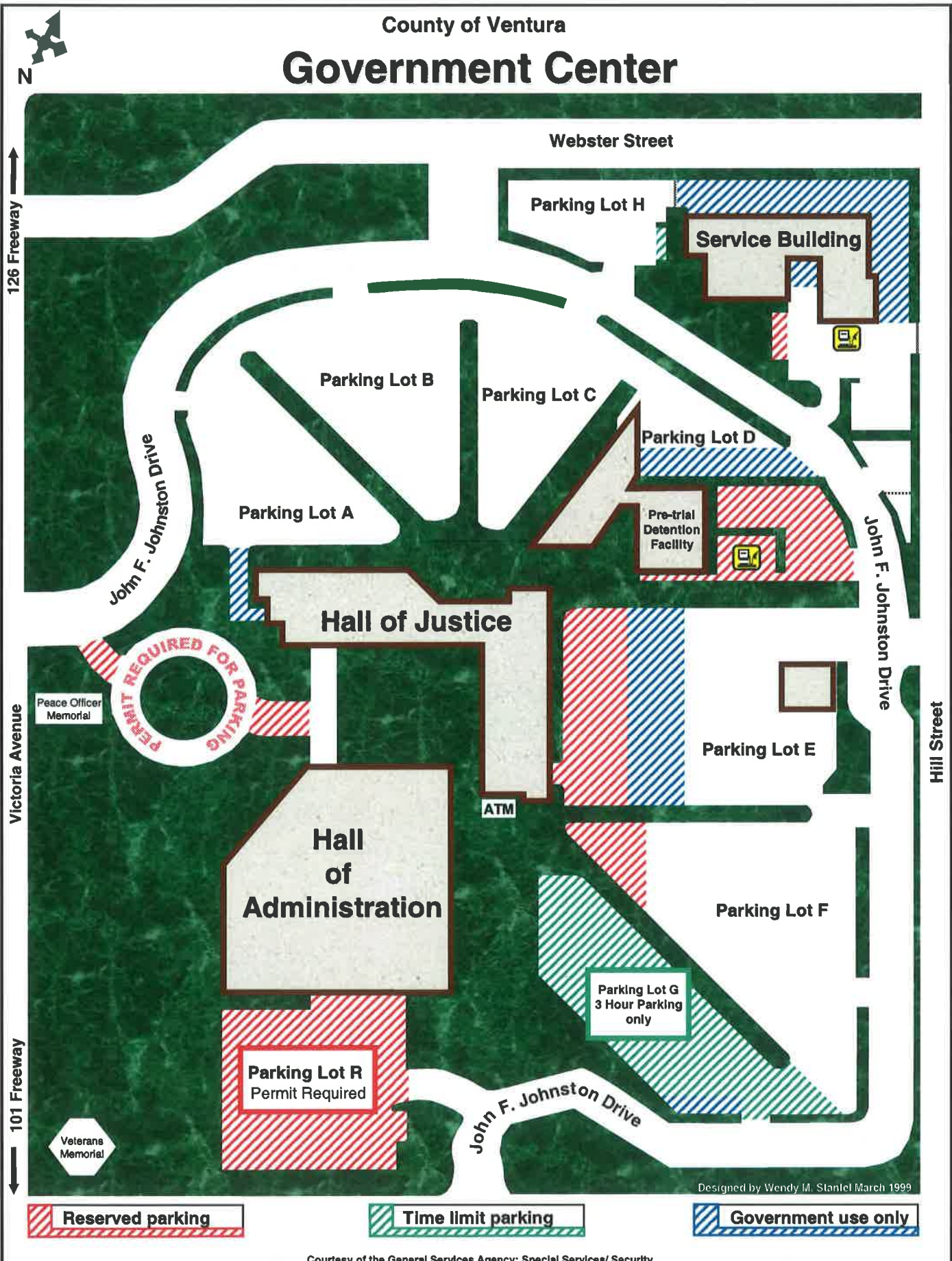
	STRONGLY AGREE	AGREE	DISAGREE	STRONGLY DISAGREE
Proceedings were open to public view as required.	_____	_____	_____	_____
Work flow of ballot processing and tabulation was easy to follow.	_____	_____	_____	_____
Audit trails and controls were exercised and obvious.	_____	_____	_____	_____
Security precautions were apparent but not repressive.	_____	_____	_____	_____
Staff was courteous and helpful.	_____	_____	_____	_____
Overall organization of processing operations was:	_____	_____	_____	_____
Efficient	_____	_____	_____	_____
Effective	_____	_____	_____	_____
Well-organized	_____	_____	_____	_____

Additional Comments: _____

Name: _____
 (Optional)

Telephone Number: _____
 (Optional)

County of Ventura
Government Center



Reserved parking

Time limit parking

Government use only

Designed by Wendy M. Stantel March 1999

Ballot Processing Area

Elections Division
Lower Plaza
Hall of Administration

← Loading Dock

